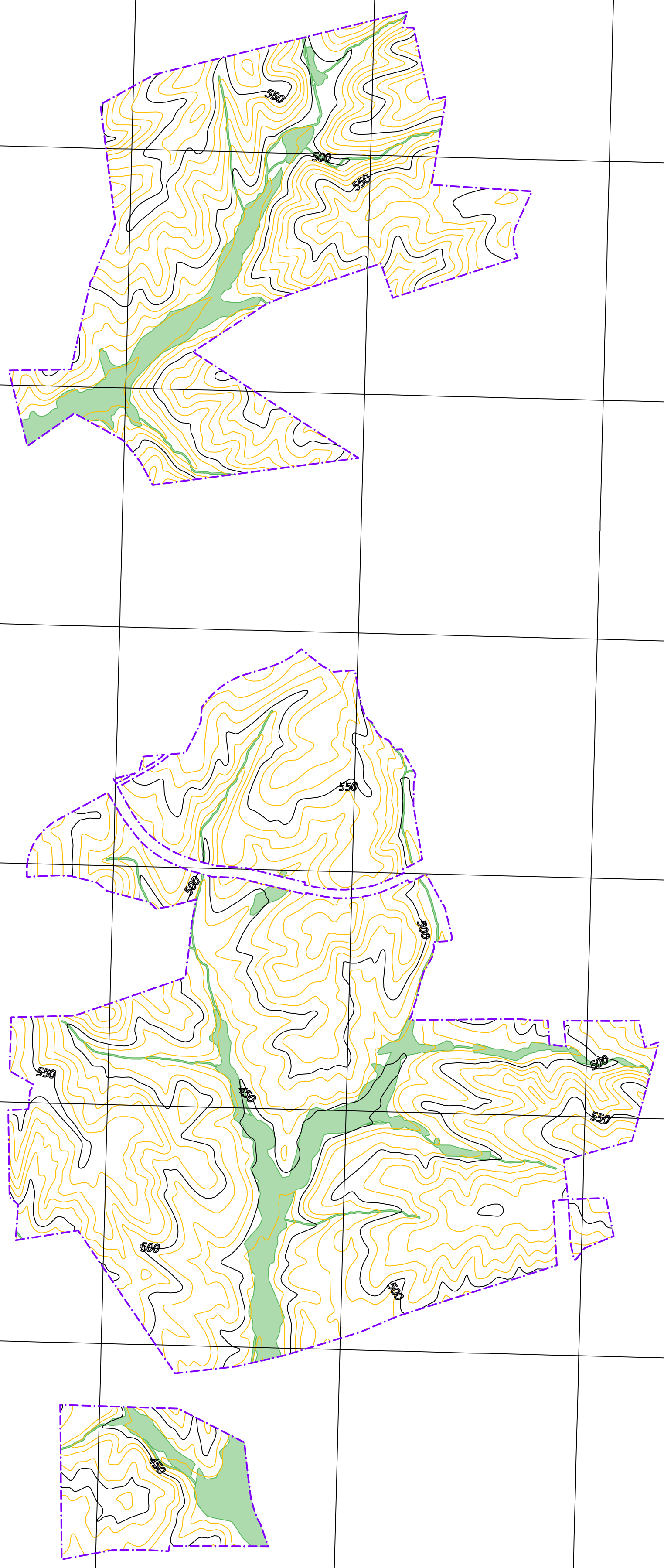


VIRGINIA STATE PLANES (NAD83)
 U.S. UTM ZONE 17
 N 4113000



N 4112000

N 4111000

N 4110000

N 4109000

N 4108000

N 4107000

E 709000

E 708000

E 709000

E 710000

E 711000

E 712000

E 713000

E 714000

E 715000

E 716000

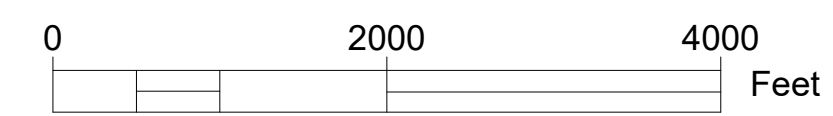
E 717000

E 718000

TOPOGRAPHY DATA IS PROVIDED BY USGS
 WETLAND DATA IS PROVIDED BY THE NATIONAL WETLANDS INVENTORY

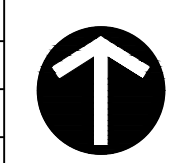
LEGEND

- SITE BOUNDARY
- 10 FT CONTOUR LINE
- WETLANDS
- 50 FT CONTOUR LINE



NOT TO BE USED
 FOR CONSTRUCTION
THE DISTRIBUTION AND USE OF THE WORK FORMS AND
 FILE OF THIS DRAWING IS UNCONTROLLED. THE USER SHALL
 VERIFY THE ACCURACY OF THIS DRAWING TO THE LATEST
 CONTROLLED VERSION.

		REVISIONS		
BY	REV	DESCRIPTION	DATE	APPROVED
DS	1	ISSUED FOR INFORMATION	06/04/2021	IL
DS	2	ISSUED FOR INFORMATION	06/30/2021	IL



23955 NOVI ROAD
 NOVI, MI 48375

TOPOGRAPHY AND WETLANDS			
TALL PINES SOLAR		CHARLOTTE COUNTY, VA	
SHEET D	DWG SCALE 1:13,800	DWG NO. TP-SL-200	SHEET 1 OF 1

